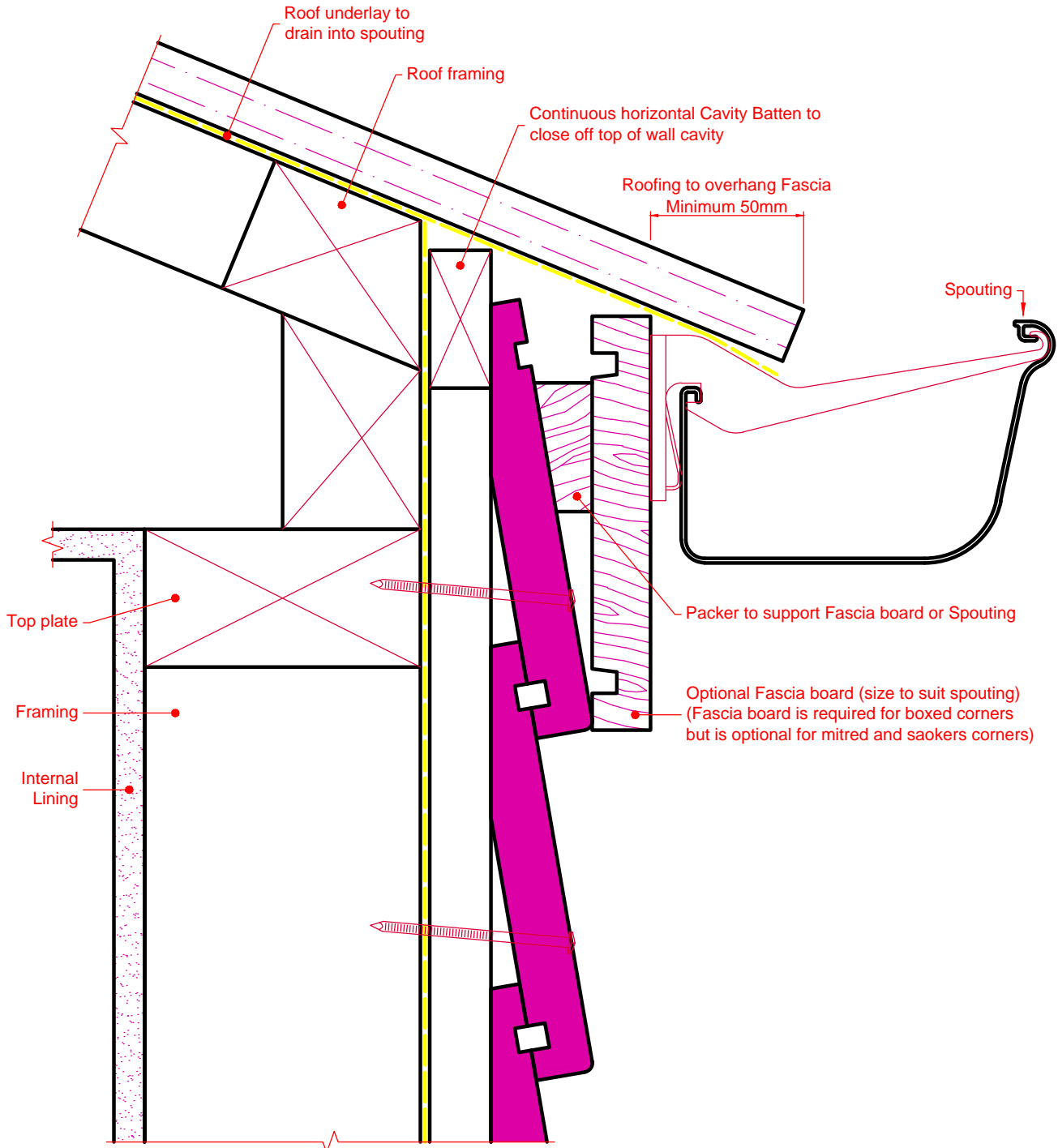


# Top Plate (Top of Wall) Details No Soffit



*Note: Refer to the Bevel Back Cavity System Installation Manual for full details*

**TIMSPEC**  
Timber Specialists  
Email: [sales@certclad.co.nz](mailto:sales@certclad.co.nz)  
Website: [www.certclad.co.nz](http://www.certclad.co.nz)

**AUCKLAND**  
64 Stoddard Rd, Mt Roskill  
Ph: (09) 620-0260  
Fax: (09) 620-0261

**CARTERTON**  
30 Kent St  
Ph: (06) 379-9381  
Fax: (06) 379-9382

**CHRISTCHURCH**  
9b Francella Place, Bromley  
Ph: (03) 384-5287  
Fax: (03) 384-5289