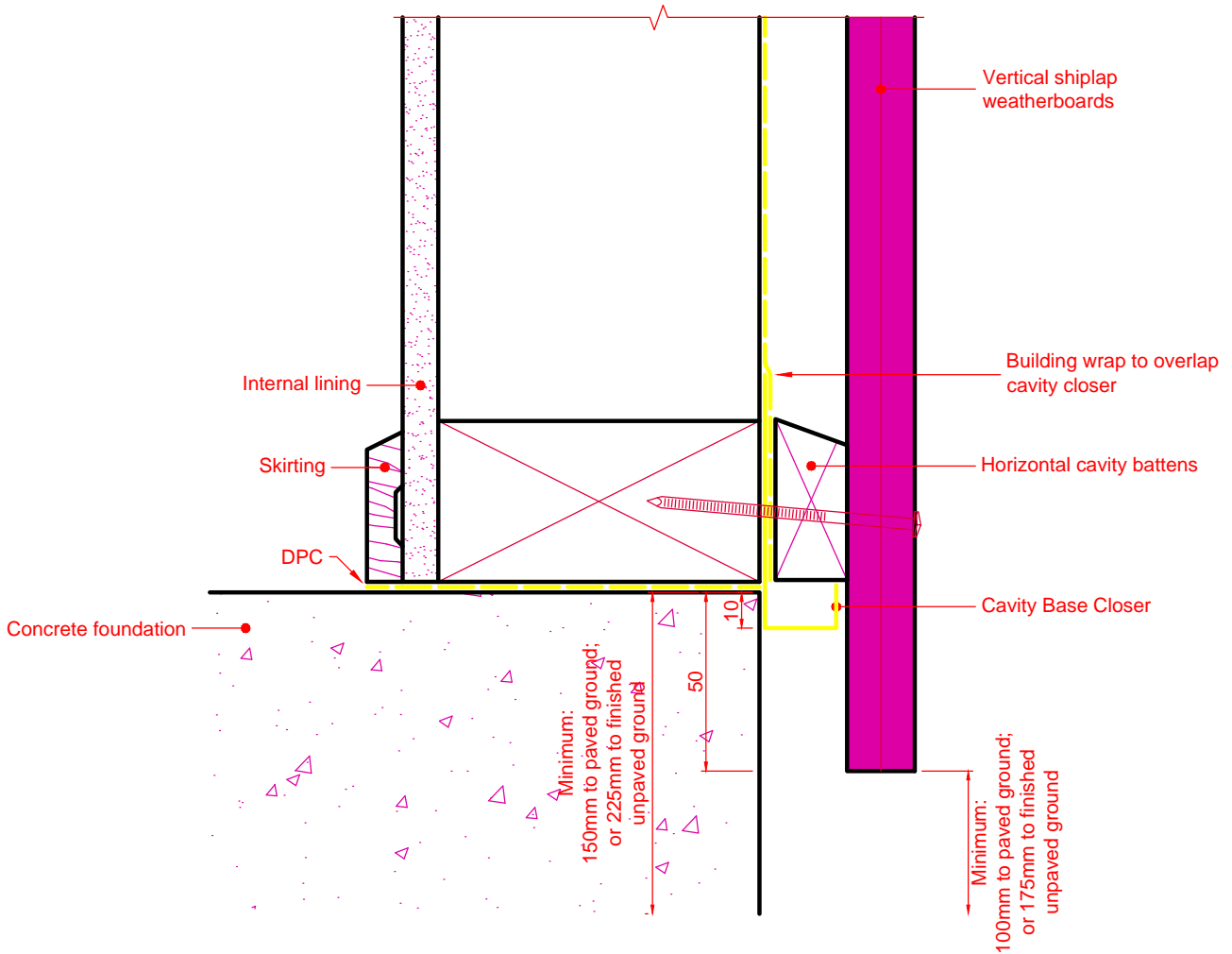


# Bottom Plate (Base of Wall) Details Concrete Slab-on-Ground



*Note: Refer to the Vertical Shiplap Cavity System Installation Manual for full details*

**TIMSPEC**  
Timber Specialists  
Email: sales@certclad.co.nz  
Website: www.certclad.co.nz

**AUCKLAND**  
64 Stoddard Rd, Mt Roskill  
Ph: (09) 620-0260  
Fax: (09) 620-0261

**CARTERTON**  
30 Kent St  
Ph: (06) 379-9381  
Fax: (06) 379-9382

**CHRISTCHURCH**  
9b Francella Place, Bromley  
Ph: (03) 384-5287  
Fax: (03) 384-5289