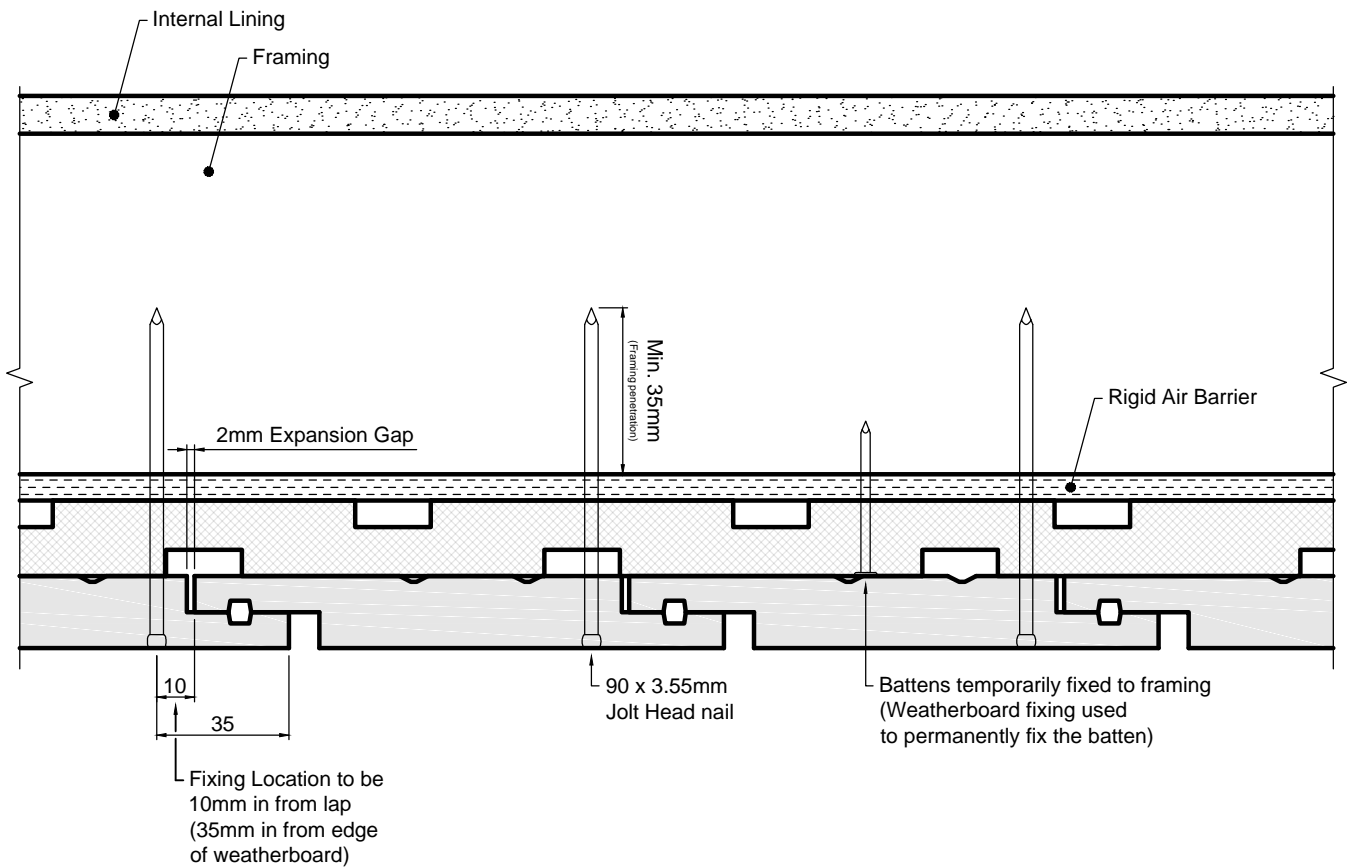


# Fixing Painted Weatherboards with Packer Cavity Battens



Note: Nails are to be on an upward angle to prevent water running down the nail through the cavity

Note: Refer to the Vertical Shiplap Cavity System with Rigid Air Barrier Installation Manual for full details

**TIMSPEC**  
Timber Specialists  
Email: sales@certclad.co.nz  
Website: www.certclad.co.nz

**AUCKLAND**  
64 Stoddard Rd, Mt Roskill  
Ph: (09) 620-0260  
Fax: (09) 620-0261

**CARTERTON**  
30 Kent St  
Ph: (06) 379-9381  
Fax: (06) 379-9382

**CHRISTCHURCH**  
9b Francella Place, Bromley  
Ph: (03) 384-5287  
Fax: (03) 384-5289